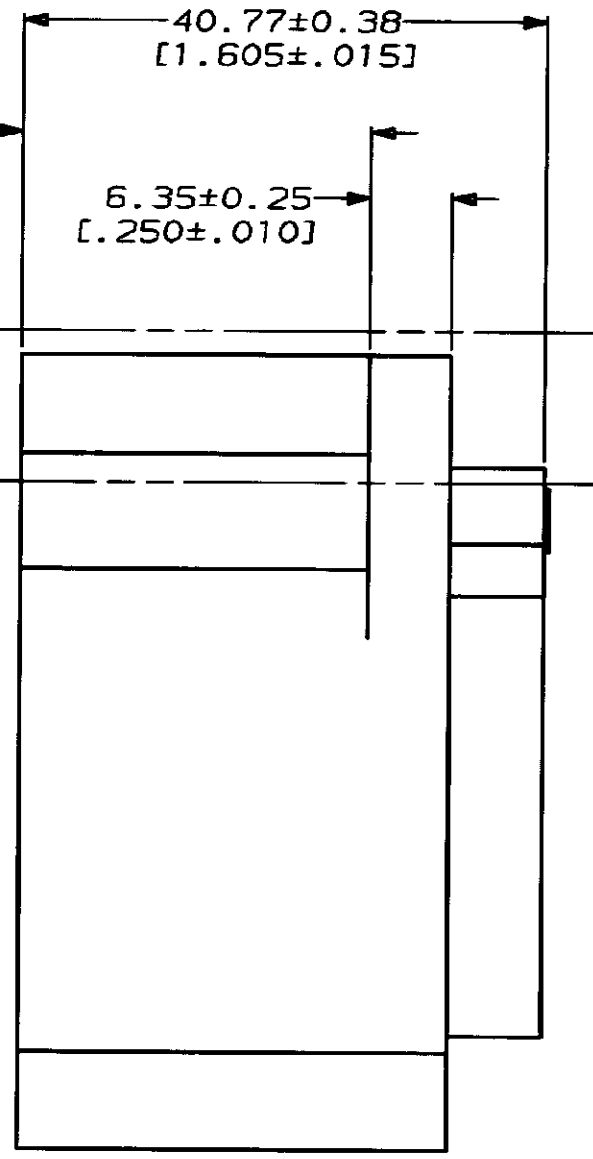
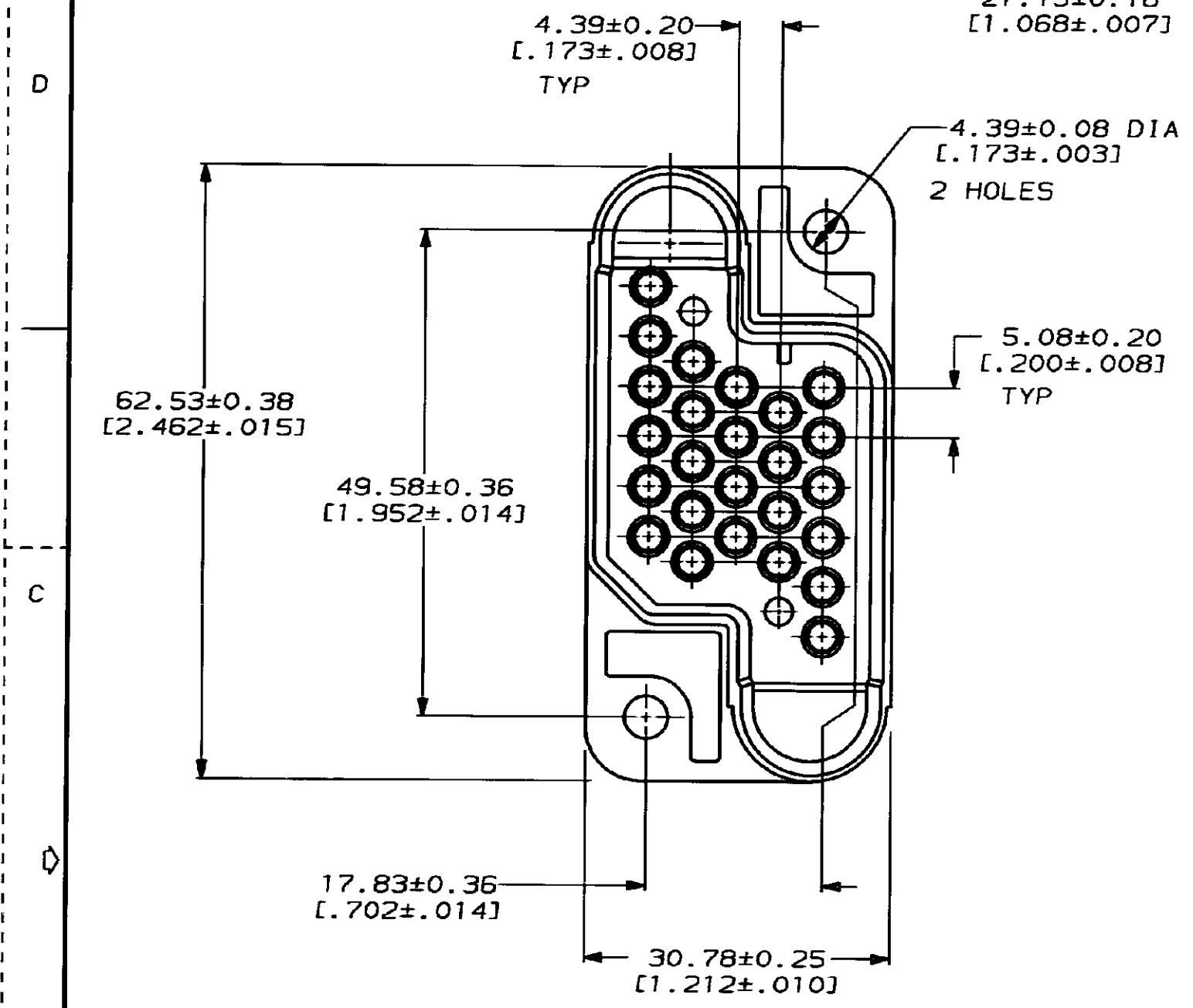
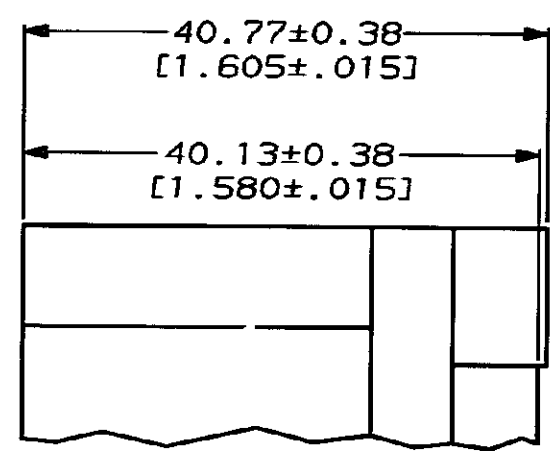
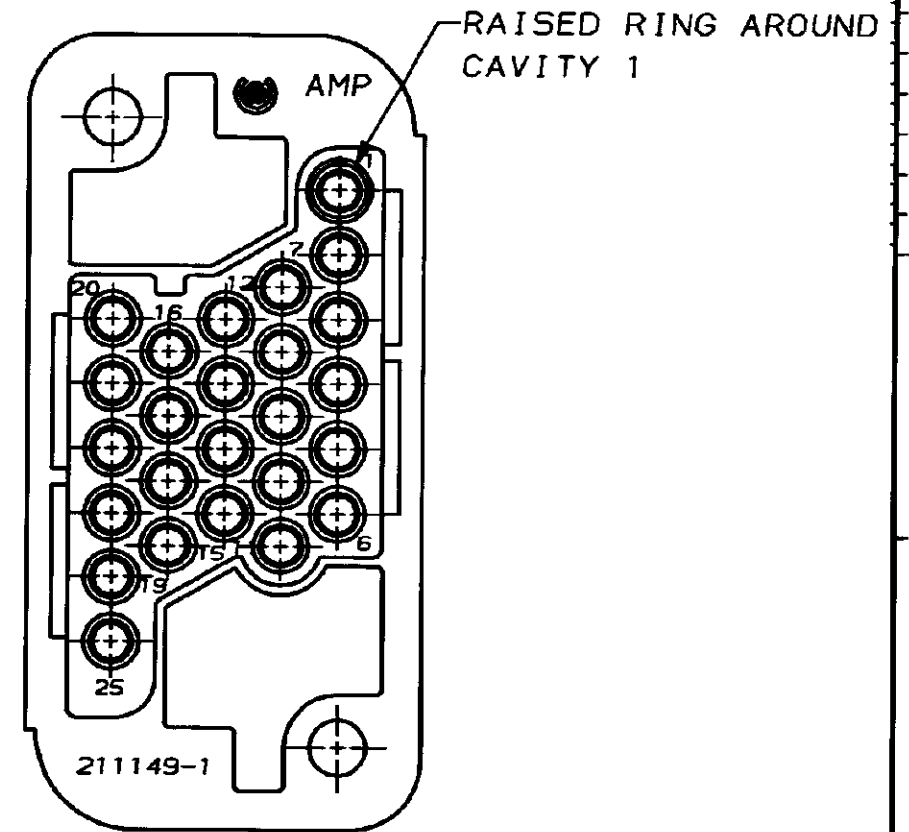


4
DRAWING MADE IN THIRD ANGLE PROJECTION
THIS DRAWING IS UNPUBLISHED. RELEASED FOR PUBLICATION
© COPYRIGHT 19 BY AMP INCORPORATED. ALL INTERNATIONAL RIGHTS RESERVED.

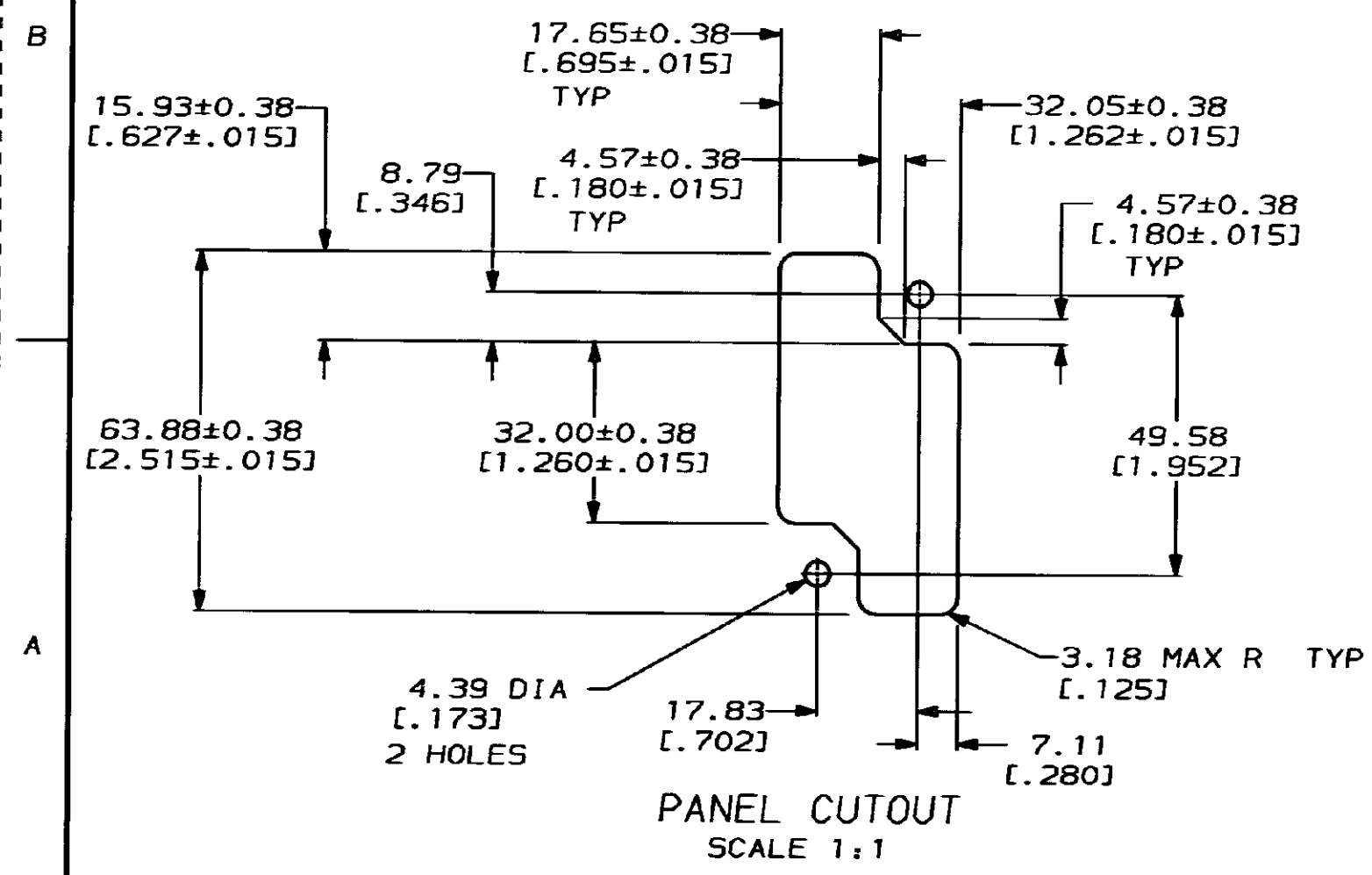
REVISIONS									
MOD	LOC	DIST	P	F	ZONE	LTR	DESCRIPTION	DATE	APPD
1	BD	39				E	REDRAWN & REV PER ECN BD5737	01/14/92	-
						F	REV PER EC 0020-0925-93	08/11/93	AT



1. THIS CONNECTOR MATES WITH SOCKET HOUSING 211150.
2. CAVITY 1 AND 25 SHOULD NOT BE USED WITH GROUND PIN.



DETAIL Z
RAISED STANDOFF 2 PLACES
211149-3 ONLY



SEE DETAIL Z	211149-3
AS SHOWN	211149-1
STANDOFF	PART NO
	PART NO

DO NOT SCALE PRINT. UNLESS SPECIFIED DIMENSIONS IN mm [INCHES] TOLERANCES ON: 2 PLC DEC ± 0.13 [.005] 3 PLC DEC ± - ANGLES ± -	DR 01/14/92 C. OBERMAN	AMP AMP Incorporated Harrisburg, PA 17105-3608	NAME	
	CHK 1-22-92 R. STONE		PIN HOUSING, 25 POSN METRIMATE	
MATERIAL POLYESTER, UL 94V-0 RATED, BLACK	APPD 1-22-92 A. TRAVIS	SIZE	CAGE CODE	DRAWING NO
FINISH	APPD 1-23-92 C. RÖHDE	③	00779	211149
	PRODUCT SPEC	SCALE	2:1	SHEET 1 OF 1
	APPLICATION SPEC	WEIGHT	-	

CUSTOMER DRAWING